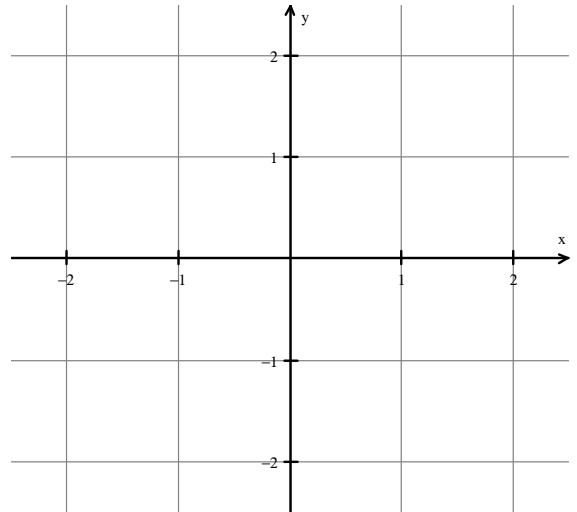
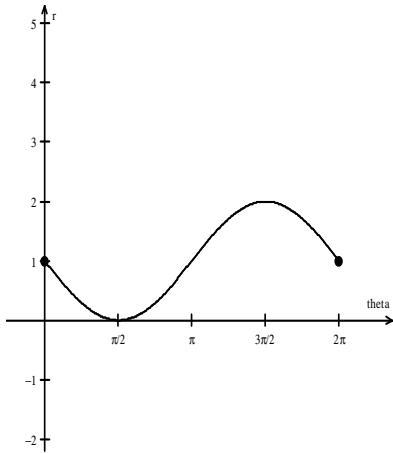


Math 265B: Graphing Polar Equations (Section 11.2)

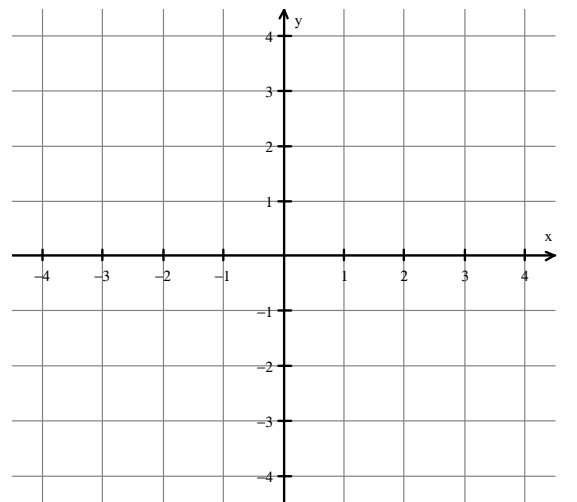
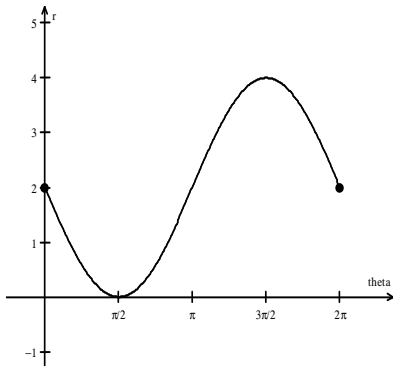
Homework Supplement. Use the Cartesian r, θ graph to graph the polar equation in the xy -coordinate system.

Check your answer by using technology to graph (calculator, Wolfram, WinPlot, etc.)

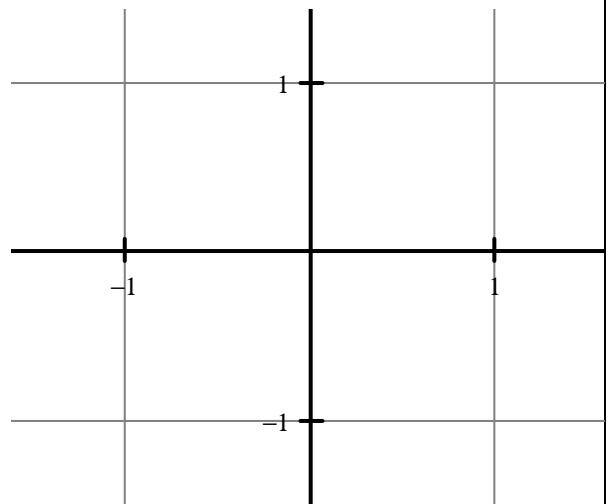
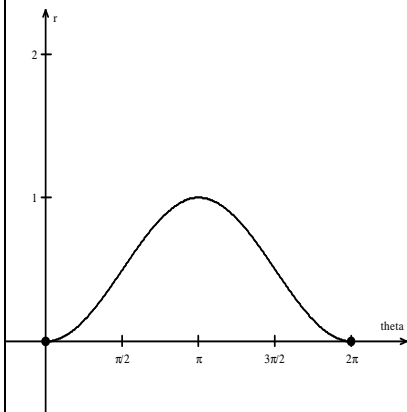
#41 $r = 1 - \sin \theta$



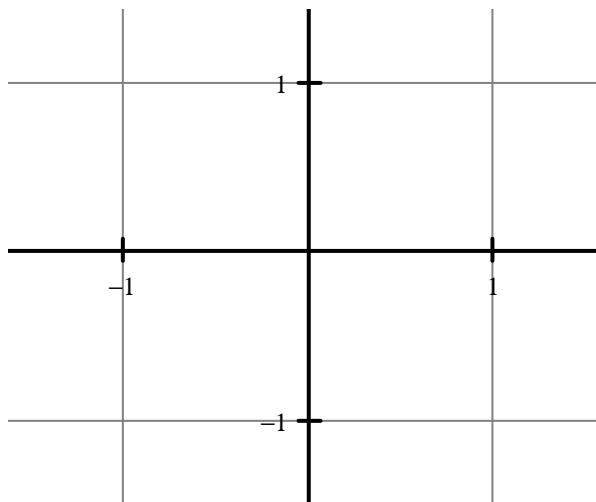
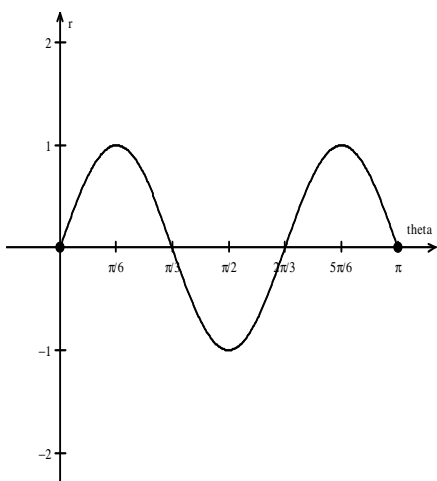
#42 $r = 2 - 2 \sin \theta$



#43 $r = \sin^2 \left(\frac{\theta}{2} \right)$



#47 $r = \sin 3\theta$



#48 $r = 2 \sin 5\theta$

